

# WATER TESTING

WATERLINK® SPIN TOUCH™  
PHOTOMETERS PHLOZONE

CENTRE MANAGEMENT  
SOFTWARE LOVIBOND®

COMMERCIAL PHOTOMETERS  
LOVIBOND® AQUALX® APP

LOVIBOND® COMMERCIAL  
TABLET REAGENTS

LOVIBOND® PHOTOMETER  
TEST KIT PARTS &  
ACCESSORIES

RESIDENTIAL

PHOTOMETER

RESIDENTIAL TESTING

AQUACHEK® TEST STRIPS TEST

STRIPS & TEST  
PILLOWS POCKET

TESTERS

# WaterLink® Spin Touch™ Photometers



Water® SpinTouch™ Mobile

## WaterLink® Spin Touch™ Mobile

- Includes: Photometer, Instruction Manual, Quick-Start Instructions, 3 Syringes, Calibration Check Disk, Troubleshooting Disk, USB Cord with USB Wall Adapter, Waterproof Carrying Case with Foam Inserts (holds meter, disks, and accessories)  
Code: PVEN1436

## WaterLink® Spin Touch™ In-Store

- Includes: Photometer, Instruction Manual, Quick-Start Instructions, 3 Syringes, Calibration Check Disk, Troubleshooting Disk, USB Cord with USB Wall Adapter, In-Store Kit (counter mat, poster, window decal, etc.)  
Code: PVEN1437

## Spin Disk Consumables

- A. Spin Disk Chlorine 104 Series - 100pk
- A. Spin Disk Phosphate 204 Series - 100pk
- A. Spin Disk Biguanide 402 Series - 100pk
- A. Spin Disk Chlorine 3x3 501 Series - 50pk
- B. Syringe 3ml - 3/Pk
- C. Syringe Tips - 3/Pk
- Calibration Check Disc - Touch

- Code: PVEN4328-J
- Code: PVEN4329-J
- Code: PVEN4331-J
- Code: PVEN4334
- Code: VIT1189
- Code: VIT1189TIP
- Code: PVEN1705



A.



B.



C.

## WaterLink® Spin Touch™

The WaterLink® Spin Touch™ photometer does all your pool & spa water testing, In the field or in store! Each sealed reagent disk contains the precise amount of reagent needed to run a complete series of tests in just 30 or 60 seconds. Simply fill a reagent disk with a water sample, place it in the meter, tap "start", & all tests are done automatically.

In the field, the results are displayed on the touchscreen, then can be transferred to DataMate® Web software to be instantly analysed, providing step-by-step treatment instructions on your mobile device and test history storage in the cloud. In the store, the Spin Touch™ is run directly from your computer using DataMate® Web or DataMate® software. The results are displayed right on your monitor with all records being kept in the cloud or on your hard drive.

## WaterLink® DataMate® In-Store Water Analysis Software for Windows

The DataMate® 10 software is a user-friendly Windows® PC-based In-Store water analysis program that generates custom water treatment recommendations for your customers. Printed in proper sequence with precise dosages & clear instructions.

Analyse - The test entry section of the DataMate® 10 includes fields to measure Free Chlorine, Total Chlorine, Bromine, Biguanide, Biguanide Shock, pH, Alkalinity, Calcium Hardness, Cyanuric Acid, Copper, Iron, Nitrate, Borate, Phosphate, Manganese, Salt, & TDS. There are check boxes for certain water conditions such as water colour, stains, cloudy, or foamy. Add your products to remedy problems like enzymes, cover cleaner, filter cleaner, pool opening & closing procedures, weekly maintenance, & salt maintenance procedures.

## Spin Disks - 10 Test Parameter Disk Series

Four different Spin Disks ideal for service, In-Store, and Public Pool Testing.

Free & Total Chlorine & pH 3-Use WaterLink® Spin Disk 501 Series

ideal for public & commercial pools testing Chlorine & pH throughout the day.

Test Free Chlorine, Total Chlorine (Bromine), Combined Chlorine (calculated), & pH in 30 Seconds!

Save money by using the same disk 3 times. 3 use disk for Free Chlorine, Total Chlorine (Bromine), Combined Chlorine, and pH - Results in 30 Seconds!

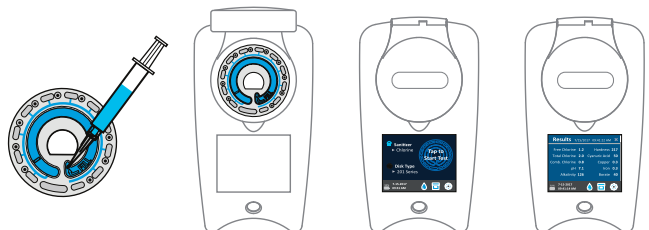
Service Professionals - New advanced scheduling & routing, "e-doorhangers" quickly capture date, time, description of work done in an email to clients from technicians on-site, complete history kept for every client showing dates, times, water test results & work done

Stores - Share customer data across multiple stores, including field service testing (one database of all customer data regardless of location, Data is securely stored, maintained, & backed-up, customisable step-by-step treatment recommendations

Commercial Pool Operators - Instant treatment instructions based upon test results, pool volume, & type, Log date, time, & test results for complete history for single pool or multiple bodies of water, Remote viewing of live & historical testing data by anyone given access management, health departments, even the public

## Customisable Chemicals & Shopping Cart

DataMate Web offers customisation for chemicals, dosage rates, treatment text, & ideal ranges, it also lets you setup products. Enter multiple product sizes for a chemical & DataMate Web will determine which size & quantity is appropriate for your customer to purchase to complete the recommendation, displaying this list directly on the water test report.



## pHLoZone Centre Management Software

### pHLoZone Centre Management Software

pHLoZone is designed specifically for commercial facilities with swimming pools & spas. Incorporates your existing protocols in a flexible, easy to use & modern style. Backed up automatically on the cloud for easy storage & retrieval.

#### Easy to Use

The system requires no IT knowledge to use. We've streamlined the system to keep it simple for your staff, while still giving you the flexibility to work the way you need to.

#### Cross-platform

Today, people use a wide range of devices to do their work. From smartphones & tablets to laptop & desktop computers, pHLoZone works on any modern internet-connected device.

#### Smart Task Tracking

With our unique "daysweeper" scheduling system, you will never lose a job, & never have one of your staff forget to complete something on their list. Incomplete tasks always move to the overdue section at the top of the list for visibility, keeping your staff accountable for their work.

- Log water tests
- Log biological tests
- Access reports
- Manage recurring tasks
- Allocate tasks to staff
- Manage assets
- Organise external contractors
- Track repairs
- Order products

#### What We Offer

We offer a purpose built system that makes running your leisure centre or commercial site much easier. The features in this list are just a part of what we offer through pHLoZone. If you'd like to see the full range of features & capabilities available, feel free to contact us for more information or to book a demonstration.

#### Seasonal Scheduling

Our seasonal scheduling system makes task tracking & scheduling easy! Assign tasks to groups of staff, plan recurring & seasonal tasks, & see incomplete jobs at a glance on the dashboard.

#### Structure & Asset Management

Store all of the information about your pools, spas, & other bodies of water to a high level of detail. Information about equipment can be stored too, ready for easy access whenever it needs repair.

#### Custom Targets & Ranges

With the ability to customise targets & ranges for each structure, you can maintain all of your bodies of water exactly the way you want them. Email notifications can also be sent each time a reading is out of range, to help keep track of your water chemistry.

#### Custom Protocols

pHLoZone adapts to your water testing workflow. You can set custom protocols so that when a reading is out of range, your staff know which procedure to follow.

#### Water Testing Device Integration

pHLoZone communicates with Spin devices, & there are more integrations to follow. If your staff test the water manually, they can also enter the test results by hand, & pHLoZone will show the relevant protocols just as it would when using an integrated device.



#### Why pHLoZone?

An application purpose built for leisure centres & commercial sites.

#### Seasonal Scheduling

Our seasonal scheduling system makes task tracking & scheduling easy! Assign tasks to groups of staff, plan recurring & seasonal tasks, & see incomplete jobs at a glance on the dashboard.

#### Comprehensive Data

Store all of the information about your pools, spas, & other bodies of water to a high level of detail. Information about equipment can be stored too, ready for easy access whenever it needs repair.

#### Intensive Management

With the ability to customise targets & ranges for each structure, you can maintain all of your bodies of water exactly the way you want them. Email notifications can also be sent each time a reading is out of range, to help keep track of your water chemistry.

#### WaterLink Spin Touch Integration

pHLoZone can communicate with Spin Touch devices to automatically receive water testing results.



# Lovibond® Commercial Photometers

## Lovibond® MD110 with Bluetooth®

The MD110 uses high quality interference filters with long life LEDs as a light source in a transparency sample chamber. This unit supplies accurate results very quickly & is easy to operate. It's ergonomically compact waterproof design makes it safe to use as a counter unit or on site. Testing is performed using Lovibond® tablet reagents with long term stability & a shelf life up to 10 years. (OTZ) One Time Zero allows the user to zero once and perform all tests.

The zero setting is held in memory. Scroll Memory avoids unnecessary scrolling for the required test method, the instrument memorises the last method used before switching off the instrument. When the instrument is switched on again, the scroll list comes up with the last used test method first.

Supplied in a carry case with tablet reagents, test cells, accessories, instructions & certificate of compliance. Use with the free app AquaLX® for Bluetooth® connectivity compatible with IOS® & Android® based smartphones & tablets.



Waterproof (IP68 1 hour at 0.1 metre)  
4 x AAA batteries (included) approx. 17 hours or 5,000 tests.  
Auto - OFF automatic switch-off  
Backlit LCD display (on keypress)  
Internal memory for 125 data sets  
Bluetooth® interface for test data transfer  
Real time clock & date  
155 x 75 x 35 mm (L x W x H)  
Weight basic unit approx. 260 g

### 6 in 1

Chlorine LR	0.01 - 6.0 mg/l
Chlorine HR	* 0.1 - 10 mg/l
Bromine	0.05 - 13 mg/l
pH	6.5 - 8.4 pH
Total Alkalinity	5 - 200 mg/l
Calcium Hardness	0 - 500 mg/l
Cyanuric Acid	0 - 160 mg/l
Code: PLOV9167T	

\* High Range tablets sold separately.

## Lovibond® MD200

This unit supplies accurate results very quickly and is easy to operate. It's compact design makes it safe to use as a counter unit or on site. Testing is performed using Lovibond® tablet reagents with long term stability and a shelf life up to 10 years.(OTZ) One Time Zero allows the user to zero once and perform all tests. Scroll Memory avoids unnecessary scrolling for the required test method, the instrument memorises the last method used before switching off the instrument. When the instrument is switched on again, the scroll list comes up with the last used test method first.

Supplied in a carry case with tablet reagents, test cells, accessories, instructions and certificate of compliance. Waterproof (IP68 1 hour at 0.1 metre). 4 x AA batteries (included) approx. 53 hours or 15,000 tests (no backlight). Auto - OFF automatic switch-off.

Backlit LCD display (on keypress). Storage memory for 16 data sets. Real time clock & date. 190 x 110 x 55 mm (L x W x H). Weight basic unit approx. 455 g



### 4 in 1

Chlorine LR	0.01 - 6.0 mg/l
Chlorine HR	* 0.1 - 10 mg/l
pH	6.5 - 8.4 pH
Total Alkalinity	5 - 200 mg/l
Cyanuric Acid	2 - 160 mg/l
Code: PLOV9164T	

### 5 in 1

Chlorine LR	0.01 - 6.0 mg/l
Chlorine HR	* 0.1 - 10 mg/l
pH	6.5 - 8.4 pH
Total Alkalinity	5 - 200 mg/l
Calcium Hardness	0 - 500 mg/l
Cyanuric Acid	2 - 160 mg/l
Code: PLOV9155T	

### 6 in 1

Chlorine LR	0.01 - 6.0 mg/l
Chlorine HR	* 0.1 - 10 mg/l
Bromine	0.05 - 13 mg/l
pH	6.5 - 8.4 pH
Total Alkalinity	5 - 200 mg/l
Calcium Hardness	0 - 500 mg/l
Cyanuric Acid	2 - 160 mg/l
Code: PLOV9156T	

\* High Range tablets sold separately.

## Lovibond® PM600 & PM630 with Bluetooth®

The PM600 Photometer range brings pool testing to the next level for discerning pool operators. The ergonomic, portable, waterproof design enables users to select just one unit for accurate analysis of up to 34 parameters anytime & anyplace. The PM600 focusses on the main pool parameters required for balanced water including: Alkalinity, Bromine, Chlorine, Cyanuric Acid, Iron, Calcium Hardness, Copper, Sodium Hypochlorite, Iron, Ozone (DPD) Phosphates & pH-value. Compatible with the tried & trusted Lovibond® Tablet reagents, it is designed to be robust, reliable yet easy to use for any pool operator.

The PM630 extends these capabilities to include up to 34 parameter variants from Acid Demand to Urea. Its unique design enables compatibility with Lovibond® Tablet, Liquid & Powder reagents, making it one of the most flexible & complete pool photometers available today. Both units offer a large, back-lit graphic display to aid analysis by providing on screen method prompts, information regarding test measurement range & reagent type and automatic countdown timers for accurate reaction periods. The internal memory is capable of storing up to 1000 results with date, time & sample ID.

Use with the free app AquaLX® for Bluetooth® connectivity compatible with IOS® & Android® based smartphones & tablets (Bluetooth® connectivity PM630 only)

PM600	PM630	Test	Range	Test Type	PM 600/PM630 - Supplied in a carry case with 100 tablet reagents each for Chlorine (free, combined, total), pH, Cyanuric Acid, Alkalinity-M, test cells, accessories, instructions & certificate of compliance. Additional tablets for other tests required. Waterproof (IP68 1 hour at 0.1 metre) 4 x AAA batteries (included) approx. 26 hours or 3,500 tests. Auto - OFF automatic switch-off, Backlit LCD display (on keypress), Storage memory for 1000 data sets, Bluetooth® interface for test data transfer, Real time clock & date PM600 without Bluetooth® Code: PLOV9172T PM630 with Bluetooth® Code: PLOV9174T
	★	Acid capacity KS4.3	0.1 - 4 mmol/l	Tablets	
★	★	Alkalinity-M (Total)	5 - 200 mg/l	Tablets	
★	★	Alkalinity-M, HR	5 - 500 mg/l	Tablets	
	★	Aluminium	0.01 - 0.25 mg/l	Powder reagent	
	★	Aluminium	0.01 - 0.3 mg/l	Tablets	
	★	Ammonia	0.02 - 1 mg/l	Tablets	
	★	Ammonia VARIO	0.01 - 0.8 mg/l	Powder reagent	
★	★	Bromine	0.05 - 13 mg/l	Tablets	
★	★	Chlorine LR	0.01 - 6 mg/l	Tablets	
★	★	Chlorine HR (DPD)	0.1 - 10 mg/l	Tablets	
	★	Chlorine	0.02 - 4 mg/l	Liquid reagent	
	★	Chlorine	0.02 - 2 mg/l	Powder reagent	
	★	Chlorine	0.1 - 8 mg/l	Powder reagent	
	★	Chlorine Dioxide	0.02 - 11 mg/l	Tablets	
★	★	Copper	0.05 - 5 mg/l	Tablets	
	★	Copper, free VARIO	0.05 - 5 mg/l	Powder reagent	
★	★	Cyanuric Acid	0 - 160 mg/l	Tablets	
★	★	Hardness, Calcium	0 - 500 mg/l	Tablets	
	★	Hardness - Total	2 - 50 mg/l	Tablets	
	★	Hardness - Total	20 - 500 mg/l	Tablets	
	★	Hydrogen Peroxide	0.03 - 3 mg/l	Tablets	
	★	Iodine	0.05 - 3.6 mg/l	Tablets	
★	★	Iron (II, III)	0.02 - 1 mg/l	Tablets	
	★	Oxygen, activ	0.1 - 10 mg/l	Tablets	
★	★	Ozone	0.02 - 2 mg/l	Tablets	
	★	PHMB (Biguanide)	2 - 60 mg/l	Tablets	
★	★	Phosphate LR, ortho	0.05 - 4 mg/l	Tablets	
	★	pH	5.2 - 6.8	Tablets	
★	★	pH	6.5 - 8.4	Tablets	
	★	pH	8.0 - 9.6	Tablets	
★	★	Sodium Hypochlorite	0.2 - 16 %	Tablets	
	★	Sulphate VARIO	5 - 100 mg/l	Powder reagent	
	★	Sulphate	5 - 100 mg/l	Tablets	
	★	Urea	0.1 - 2.5 mg/l	Tablets / Liquid reagent	



## Lovibond® MD100

The MD100 has all the features as the MD110 except it does not have Bluetooth® connectivity.

Supplied in a carry case with tablet reagents, test cells, accessories, instructions & certificate of compliance.

Chlorine LR	0.01 - 6.0 mg/l
Chlorine HR	* 0.1 - 10 mg/l
Bromine	0.05 - 13 mg/l
pH	6.5 - 8.4 pH
Total Alkalinity	5 - 200 mg/l
Calcium Hardness	0 - 500 mg/l
Cyanuric Acid	2 - 160 mg/l

\* High Range tablets sold separately.

MD100 4 in 1 (CL, pH, Alk, Cys)	Code: PLOV9164T
MD100 5 in 1 (CL, pH, Alk, CalH, Cys)	Code: PLOV9165T
MD100 6 in 1 (CL, Br, pH, Alk, CalH, Cys)	Code: PLOV9166T



## Lovibond® AquaLX® App



### AquaLX® App

The AquaLX® app is the ideal supplement to Lovibond photometers. Creation of multi users, customers & measuring locations. Integrated data management. Sorting & representation of measurements according to sampling locations, customers, parameters, etc. With the Bluetooth® interface, measuring results for quick evaluation & processing can be transmitted to smart phones or tablets, so all data can be evaluated & allocated directly on site. The app displays all measurements in a clear graph with minimum & maximum thresholds & supports data export as an Excel® compatible CSV file.

#### System requirements:

Bluetooth® capable smart phone or tablet  
Android™ version 4.3 or later, iOS® 7 or later  
Get the App for free from Apple® App Store® and Google Play™ store

## Lovibond® Commercial Tablet Reagents



### Lovibond® Tablet Reagents

Lovibond® tablet reagents combine accuracy and reliability with convenience & ease of use. Stable in storage, with a very long shelf life. Lovibond® test kits contain tablet reagents individually sealed in aluminium foil pocket blister strips for protection from the effects of heat, moisture and the atmosphere. It should remain “fresh” right up to the time you push it out into the sample, no need to touch the tablet with your fingers. Most tests use just one tablet which contains all the reagents & other additives required. Lovibond® Phenol Red tablets, for example, contain a mixture of carefully balanced additives to counteract the effect of Chlorine on the pH determination. In many cases, several different tests can be carried out using the same reagent; for instance DPD No. 1 tablets are used with or without other reagents in determining concentrations of Free, Combined & Total Chlorine, Monochloramine & Dichloramine, Chlorine Dioxide, Bromine & Ozone.

Lovibond® Tablet Reagent	Pack Size	MD100/110 MD200	ChekitDirect	PCcheckit	PM600	PM620 PM630	Comparator/ Mini Kit	Code
<b>Chlorine</b>								
DPD No. 1 *	100/pack	★	★	★	★	★	★	PLOV9601R
DPD No. 1 High Range *	100/pack	★			★	★		PLOV9605R
DPD No. 3 High Range *	100/pack	★			★	★		PLOV9606R
DPD No. 1 High Calcium	100/pack	★	★	★	★	★		PLOV9718R
DPD No. 2	100/pack						★	PLOV9602R
DPD No. 3 *	100/pack	★	★	★	★	★	★	PLOV9603R
DPD No. 4	100/pack						★	PLOV9604R
<b>Bromine</b>								
DPD No. 1	100/pack	★	★	★	★	★	★	PLOV9601R
<b>pH</b>								
Phenol Red Photometer *	100/pack	★	★	★	★	★		PLOV9625R
Phenol Red	100/pack						★	PLOV9620R
<b>Total Alkalinity</b>								
Alka (-M)	100/pack	★	★	★	★	★		PLOV9636R
Total Alkalinity	100/pack						★	PLOV9630R
Alka M HR Photometer *	250/pack				★	★		PLOV9638R
<b>Calcium Hardness</b>								
Calcio H No.1 & No.2 Photometer *	250/pack	★	★		★	★		PLOV9648R
Calcheck (use with 16mm cells)	100/pack			★				PLOV9647R
Calcium Hardness	100/pack						★	PLOV9640R
<b>Cyanuric Acid</b>								
CyA TEST Photometer	100/pack	★	★	★	★	★		PLOV9685R

\* May be used in Palintest® Photometers

Use DPD No 1 High Calcium Tablets if Turbidity in the water sample caused by high concentration of Calcium and/or High Conductivity.



## Lovibond® Photometer Test Kit Parts & Accessories

### Lovibond® Photometer Test Kit Parts

- A. Test Cell 10 ml (24 mm<sup>ø</sup>) Round - Glass
- B. Test Cell 16 mm path length - Glass (Calcheck)
- C. 100 ml Plastic Shaker Tube
- D. Plastic Stirring/Crushing Rod
- E. Test Cell Cleaning Brush 10 cm
- F. Syringe 10 ml

- Code: PLOV9810A
- Code: PLOV9811A
- Code: PLOV9930S
- Code: PLOV9926S
- Code: PLOV9920S
- Code: PLOV9940S



## Residential Testing

### Rapid Dissolving Tablets

- DPD No. 1 - Rapid Dissolving 100/pack PTAB5120
- DPD No. 3 - Rapid Dissolving 100/pack PTAB5105
- Phenol Red - Fast Dissolving 100/pack PTAB5115



### Cyanuric Acid Reagent

- Cyanuric Acid Reagent 5 ltr
- Code: IQCR7005



## Aquachek® Test Strips



### Chlorine 4 Way

Free Chlorine, Cyanuric Acid, pH and T.Alk

Bottle	50/strip	6/ctn	ETCU7001
Blister	50/strip	12/ctn	ETCB7012
Display (18 Bottles)	50/strip	1/ctn	ETCD7020

### Mixed Chlorine / Bromine 4 Way

Free Chlorine, Cyanuric Acid, pH and T.Alk

Total Bromine, pH, T.Alk. and Total Hardness

Display (9 Each)	50/strip	1/ctn	ETMD7020
------------------	----------	-------	----------



### Bromine 4 Way

Total Bromine, pH, T.Alk. and Total Hardness

Bottle	50/strip	6/ctn	ETBU7001
Blister	50/strip	12/ctn	ETBB7012
Display (18 Bottles)	50/strip	1/ctn	ETBD7020

### Monopersulphate 3 Way

Monopersulphate, pH, Total Alkalinity

Blister	50/strips	12/ctn	Code: ETM07012
---------	-----------	--------	----------------



### Salt Titration

Salt as Sodium Chloride

400 - 7,000 mg/l

Blister	10/strip	12/ctn	Code: ETST7012
---------	----------	--------	----------------



### Biguanide 3 Way

Biguanide, pH and Total Alkalinity

Use for testing Aquacadabra® and Baquacil®

Blister	25/strip	12/ctn	Code: ETBG7012
---------	----------	--------	----------------





## Test Strips & Test Pillows

### Silver 7 in 1

Free Chlorine, Total Chlorine, Total Bromine, pH, Total Hardness, Total Alkalinity & Cyanuric Acid.  
Bottle 100/strip each  
Code: ETSU7001



### Borate

Use to test IQ Enhance.  
Borate 0, 15, 30, 50, & 80 mg/l.  
Bottle 25/strip 6/ctn  
Code: ETBT7001



### Copper

Use to test for Copper.  
Bottle 25/strip 6/ctn  
Code: ETCO7001



### Iron

Tests total iron including ferric  $Fe^{3+}$  & ferrous  $Fe^{2+}$   
Bottle 25/strip each  
Code: ETIR7001



### Total Dissolved Solids (TDS)

Used to test TDS.  
Bottle 25/strip 6/ctn  
Code: ETDS7001



### Total Hardness

Tests low range up to 120 mg/l and high range from 250 to 1,000 mg/l.  
Bottle 25/strip 6/ctn  
Code: ETTH7001



### Chlorine Dioxide

Measures 0-10 ppm. 50 test strips per pack. Use with IQ Pool Solutions C-5 Tablets & Liquid.  
Code: VIT2999LR



### Phosphate Test

Test Phosphate levels in one minute 20/test  
Code: ETPT7020



### IQ Smart Check 5 in 1

Free Chlorine, Bromine, pH, Total Alkalinity, Total Hardness.  
Bottle 50/strip Code: ETSC7001  
Display (20 bottles) Code: ETSD7020



### Theralux Mineral Pool & Spa Test Strips

Test when using Theralux Earth Minerals.  
25/strip  
Code: ETMT6025



## Pocket Testers

### Apera Salt2

Measures Salt/Temperature  
Code: PPROBE110



### Apera TDS20

Measures TDS/Temperature  
Code: PPROBE150



### Apera pH20

Measures pH/Temperature  
Code: PPROBE120



### Apera ORP60

Measures ORP/Temperature  
Code: PPROBE140



### Apera PC60

Measures pH/Conductivity/TDS/Salinity & Temp.  
Code: PPROBE130 (Ionix PC5 shown)



### Digital Thermometer

Water resistant, Max/Min Memory  
Range: -10° - 200° C.. Accuracy  $\pm 1^\circ$  C.  
Code: PPROBE410



### Calibration Solutions

pH 4.00 Red	500 ml	Code: PINS51305
pH 7.00 Green	500 ml	Code: PINS51300
pH 10.00 Blue	500 ml	Code: PINS51307
Salt 5,000 ppt	500 ml	Code: PINS51310
O.R.P. 475 mV	500 ml	Code: PINS51315
Conductivity 12.88	500 ml	Code: PINS51320
Conductivity 1413	500 ml	Code: PINS51325



Model	Salt2	TDS20	pH20	ORP60	PC60
LCD Display	Salinity & Temp.	TDS & Temp.	pH & Temp.	ORP & Temp.	pH, Conductivity, TDS, Salinity and Temp.
Range	Salt: 0 - 100.0 ppm 0 - 10.00 ppt. (x 1000=ppm) Temp: 0 - 50° C	TDS: 0 - 100.0 ppm 0 - 10.00 ppt. (x 1000=ppm) Temp: 0 - 50° C	-1.0 to 14.0 pH Temp: 0 - 50° C	ORP: $\pm 1000$ mV Temp: 0 - 50° C	pH -2.0 to 16.0 Salinity: 0.0 - 10.00 p.p.t. TDS: 0.1-1000.0ppm, TDS Factor: 0.40 to 1.00 Cond.: 0-200.0 $\mu$ S, 0-2000 $\mu$ S, 0-20.00mS Temp: 0 to 50° C
Resolution	Salt: 0.1/1 ppm; 0.01 p.p.t. Temp: 0.1° C	TSD: 0.1/1 ppm; 0.01 p.p.t. Temp: 0.1° C	0.1 pH Temp: 0.1° C	ORP: 1 mV Temp: 0.1° C	0.01/0.1 pH Cond.: 0.1/1 $\mu$ S, 0.01 mS Temp: 0.1° C
Accuracy	Salt: $\pm 1\%$ of Full Scale Temp: $\pm 0.5^\circ$ C	TDS: $\pm 1\%$ of Full Scale Temp: $\pm 0.5^\circ$ C	$\pm 0.1$ pH Temp: $\pm 0.5^\circ$ C	$\pm 0.2\%$ of Full Scale	pH: $\pm 0.01$ Cond.: $\pm 1\%$ Full Scale Temp.: $\pm 0.5^\circ$ C
Calibration	1 point Auto	1 to 2 point Auto	1 to 3 point Auto	1 point Auto	pH/Cond: 1-3 point Auto
Auto-Off	After 8 minutes of inactivity				
LCD	180° Viewing Angle	180° Viewing Angle	180° Viewing Angle	180° Viewing Angle Blue/Green/Red	180° Viewing Angle Blue/Green/Red
ATC	Yes	Yes	Yes	No	Yes
Auto Stable	Icon displays when stable				
Self Diagnostic	Battery Indicator, Message Codes				
Waterproof	IP67 Floatable				
Batteries	DC 3V 4 x AAA batteries				
Included	Instrument, Carry Case, Lanyard, Calibrations Standards, Batteries and Instructions				
Warranty	One year warranty against manufacturing defects				